

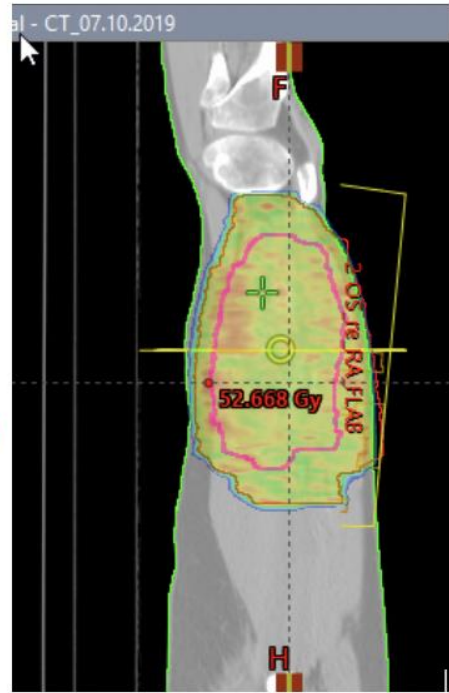
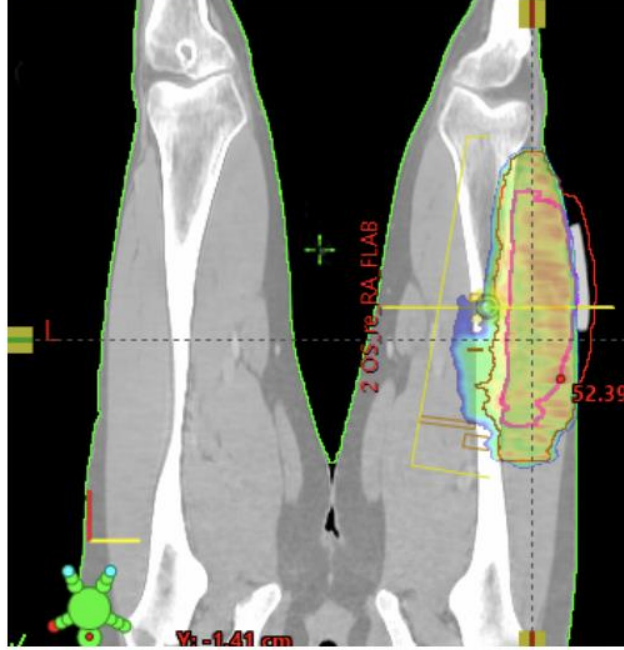
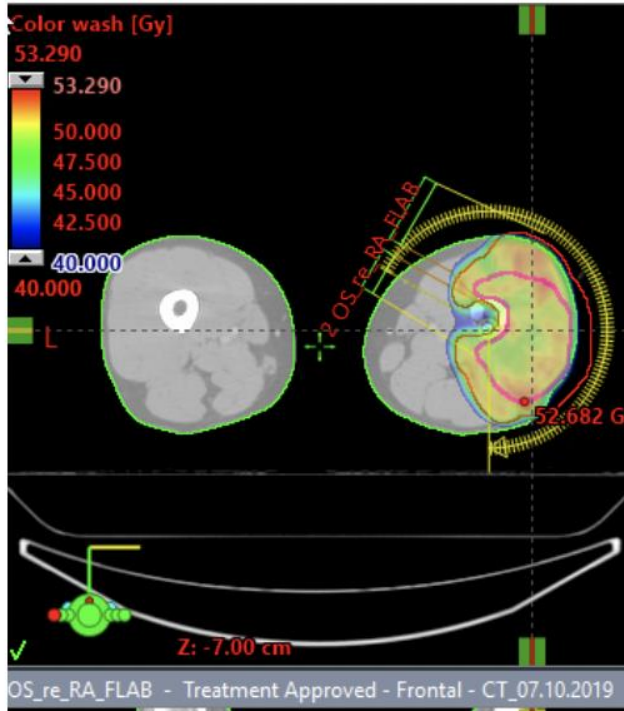
SOP: REPORTING ON RADIATION THERAPY

When?

- the responsible radiation oncologist enters data into the registry after completion of RT (typically after completion of re-staging/preoperatively).

How?

- Log into the registry, go to “therapy”, choose “radiation oncology”.
- Fill in the following information:
 - Sequence of RT
 - Preoperative
 - Intraoperative
 - Postoperative
 - Definitive
 - unknown
 - Aim of RT
 - Curative
 - Locally curative
 - Palliative
 - unknown
 - RT technique
 - Intensity modulated Radiation Therapy (IMRT)
 - Volumetric Modulated Arc Therapy (VMAT)
 - Stereotactic Radiation Therapy (SRT)
 - 3-Dimensional Conformal RT (3DCRT)
 - 2-dimensional RT (2DRT)
 - unknown
 - RT type
 - Photons
 - Protons
 - Electrons
 - Brachytherapy (transient)
 - Brachytherapy implants (permanent)
 - Conventional (kV, Roentgen Beam)
 - Other
 - unknown
 - date Start of RT
 - date End of RT
 - total dose
 - how many fractions
 - comments: please include here GTV & PTV
 - load the file up of your planning strategy (please see example below):
 - color wash including RT-doses
 - in 3 plains
 - provide absolute values in Gy
 - include all relevant anatomy
 - include GTV-/PTV-volume



GTV_Okt 2019

External Beam Planning

i Volume = 669.92cm³
Equiv. Sphere Diam. = 10.9cm

PTV_Okt 2019

External Beam Planning

i Volume = 1841.58cm³
Equiv. Sphere Diam. = 15.2cm